

Seal Handling & Installation Instructions (How To Guide)

Omniseal Solutions' Omniseal® Dynamic, External Metal Lip Seal

Handling

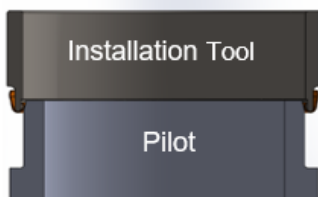
****Whenever possible, you should handle and install the seal in a DRY environment with no wind or dust.***

1. Clean the gland with an appropriate solvent and a clean wipe. Inspect the gland for nicks, dirt, burrs, indentations, and sharp edges. If the metal lip seal needs to pass over sharp edges, threads, etc., additional installation instructions and tools may be required.
2. Clean a table and put appropriate protective paper over surface. Put on clean, lint-free, soft gloves to protect the seal and gland. Keep these gloves on until the lip seal is fully installed. Carefully unpack the seal and place on the table.
3. Remove the lip seal from the individual container or bag. Use a pair of scissors if required but take care the sharp ends do not make contact with the seal. If the longer leg of the lip seal is on the inner diameter (ID), please consult with our technical experts regarding Omniseal® Dynamic, Internal Metal Lip Seal handling and installation instructions.
4. Take a soft, lint-free cloth and wipe the lip seal. If you notice a scratch or any other damage on the seal, please do not install the seal and contact Omniseal Solutions™ immediately at help@omniseal-solutions.com or your following local customer service areas:
 - Americas: (USA) +1 800 544 0080
 - Asia: (China) +86 21 5472 1568, (Japan) +0266 79 6430
 - Europe: (Belgium) +32 3 458 2828

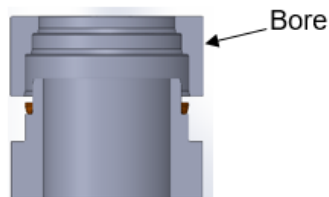
Installation

*****When allowed, lubricants (grease, oil, etc.) compatible with the media to be sealed can EASE assembly.***

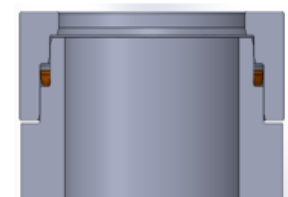
5. Prior to installation, obtain or fabricate the proper installation tool. General configuration of the installation tool is a sleeve that fits inside the cup formed by the lip seal and provides a pushing location and alignment for installation.
6. First, align the lip seal on the pilot cavity/hardware (inner diameter of the cavity). Place installation tool inside the cup formed by the lip seal (Figure 1 below). Apply a constant even load to the back end (top) of the installation tool until lip seal is fully seated against the pilot shoulder. Approximately 150 to 200 lbs. will be required to install the seal. **Take care that the tool does not become misaligned or angled to one side during installation to avoid damage.**
7. Remove installation tool. It should move freely and require little to no force to remove once seal has been installed.
8. Align bore cavity/hardware (outer diameter of the cavity) with the pilot (Figure 2 below). Hold either the bore or pilot steady while sliding the two together. Some load will be required to completely slide the bore and pilot into each other. This may require tools or a press. Once pilot and bore have been fully seated to proper depth, the assembly may be moved (Figure 3 below).



- 1** Align lip seal with pilot, then fit installation tool in seal. Use 150 to 200 lbs. of pressure to install seal on pilot.



- 2** Align bore with pilot and slide together.



- 3** When fully seated, assembly may be moved.